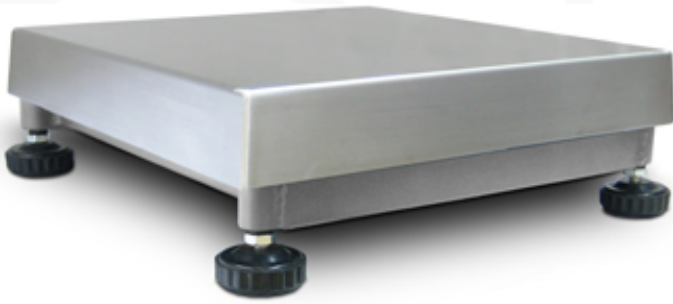


"PBI" SERIES SINGLE CELL STAINLESS STEEL PLATFORMS



INOX

IP65

CE M 3000e

Small and medium capacity electronic platforms with a stainless steel surface having a precise and sturdy structure. Suitable for creating scales and automatic weight checking systems for all industrial and commercial applications. The standard version is provided with approved load cell.

TECHNICAL FEATURES

- Functions with a "single point" 350 Ohm aluminium load cell, in stainless steel hermetic cover, approved according to OIML R60 C3 standards (3000 divisions), IP65 protection degree.
- Stainless steel tubular structure, with adjustable resting feet and level.
- Fitted with stainless steel loading surface.
- Up to 15 Vdc power supply.
- Screened 3m cable for connection to the indicator.
- Upon request:
 - 3000e CE-M approval;
 - support column for indicator.

Weighing platform: Available versions

Code	Dimensions (LxPxH)	Max Capacity kg	Standard Division g	CE-M Division g (*)
PBTI6	300x300x130	6	2	2
PBTI15	300x300x130	15	5	5
PBTI30	300x300x130	30	10	10
PBQI30	400x400x140	30	10	10
PBQI60	400x400x140	60	20	20
PBQI150	400x400x140	150	50	50
PBXI60	600x600x150	60	20	20
PBXI150	600x600x150	150	50	50
PBXI300	600x600x150	300	100	100

(*) CE-M divisions are obtainable only with the relative options.

Weight indicators and accessories

Code	Description
DFWL	Multifunction weight indicator with ABS case, 5-key keypad and LCD backlit display.
DFWLI	Multifunction weight indicator, in IP68 stainless steel, with 5-key easy to use keypad.
DFWLKI	Multifunction weight indicator, in IP68 stainless steel, with 17-key easy to use keypad.
AFW	Multifunction weight indicator in ABS, with LCD display having 6 high contrast 24mm digits, power supply through built-in rechargeable battery
ILW	Multifunction weight indicator in ABS, with LCD display having 6 high contrast 52mm digits, power supply through built-in rechargeable battery
PBCL350	Support column for weight indicators, max 350 mm high, for "PB" series single cell platforms, fitted with fixing bracket for indicator.
PBCL500	Support column for the weight indicators, max 500 mm high, for "PB" series single cell platforms, fitted with fixing bracket for indicator.
PBCL700	Support column for weight indicators, max 700 mm high, for "PB" series single cell platforms, fitted with fixing bracket for indicator.
PBSTF	Fixing bracket for mounting the indicator to the PB series platforms.
CSP42I	Stainless steel support column for the DFW, 3590, TRS series' indicators. Dimensions 520 x 527 mm, 1026 mm high, tubular Ø = 42 mm.
CSP38I	Stainless steel support column for the indicators of the SCALE HOUSE range. Dimensions 520 x 527 mm, 1026 mm high, tubular Ø = 38 mm.
CSP38D	Stainless steel support column with painted steel base, for the indicators of the DINI ARGEO range. Column height 750 mm.
CSP38SH	Stainless steel support column with painted steel base, for the indicators of the SCALE HOUSE range. Column height 750 mm.