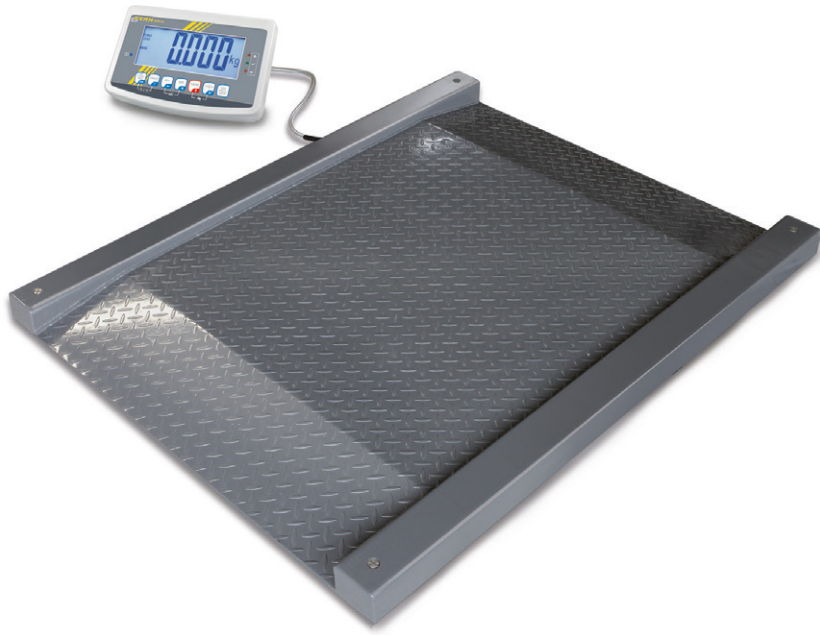


Drive-through scale KERN NFB



Industrial drive-through scale with two integrated access ramps and EC type approval [M]

Features

- **Robust drive-through scale** for rapid weighing of e.g. wire cage trolleys, shelf trolleys, container trolleys, storage trolleys, sack trucks, transpallets, mobile containers refuse bins etc.
- **Weighing bridge made of non-slip steel chequer plate, lacquered**, extremely resistant to bending. Also available as component without the display device, KERN KFD-V20, see page 139
- **4 Load cells steel, silicone-coated.** Protection against dust and water splashes IP67, temporary use in wet areas is possible
- **Display device KERN KFB-TM**, details see page 134

Technical data

- Large backlit LCD display, digit height 52 mm
- Overall dimensions WxDxH
 - A 1600x1200x78 mm
 - B 1800x1400x78 mm
- Weighing surface, without access ramps WxD
 - A 1000x1000 mm
 - B 1200x1200 mm
- Dimensions of display device WxDxH 250x160x58 mm
- Cable length of display device approx. 5 m
- Permissible ambient temperature -10 °C / 40 °C

Accessories

- **Protective working cover** over the display device standard, can be retrofitted, KERN KFB-A02
- **Rechargeable battery pack internal**, operating time up to 35 h without backlight,

Note: For verified scales the weighing bridge must be fixed to the floor with a base plate pair

Limited range of tare with verifiable models (1/6 from [Max])

■ Shipment via freight forwarder. Please ask for dimensions, gross weight, shipping costs

charging time approx. 10 h, must be ordered at purchase, KERN KFB-A01

- **Stand** to elevate display device, height of stand approx. 750 mm, KERN BFS-A07
- **Signal lamp** for visual support of weighing with tolerance range, WxDxH 100x180x300 mm, see page 160, KERN CFS-A03
- **Pair of base plates** to fix the weighing bridge to the floor, KERN BFS-A06
- **Y cable** for parallel connection of two terminal devices to the RS-232 interface on the balance, e.g. signal lamp and printer, KERN CFS-A04
- **Large display with superior display size**, digit height 76 mm. WxDxH 541x55x180 mm, for details see page 160, KERN YKD-A02
- **Cable with special length 15 m**, between display device and platform, for verified models, this must be ordered at the time of purchase, KERN BFB-A03
- **Suitable printers** and an extensive accessories range, see page 157 ff.

STANDARD



OPTION



FACTORY



Model	Weighing range [Max] kg	Readout [d] g	Minimum load [Min] kg	Verification value [e] g	Net weight approx. kg	Weighing plate	Options			
							Verification		DAkkS Calibr. Certificate	
							M KERN		DAkkS KERN	
NFB 600K200M	600	200	4	200	131	A	965-230		963-130	
NFB 600K200LM	600	200	4	200	150	B	965-230		963-130	
NFB 1.5T0.5M	1500	500	10	500	131	A	965-230		963-130	
NFB 1.5T0.5LM	1500	500	10	500	150	B	965-230		963-130	

Note: For applications that require verification, please order verification at the same time, initial verification at a later date is not possible. Verification at the factory, we need to know the full address of the location of use.

KERN Pictograms

 Internal adjusting: Quick setting up of the balance's accuracy with internal adjusting weight (motordriven).	 Recipe level A: Separate memory for the weight of the tare container and the recipe ingredients (net total).	 Suspended weighing: Load support with hook on the underside of the balance.
 Adjusting program CAL: For quick setting up of the balance's accuracy. External adjusting weight required.	 Recipe level B: Internal memory for complete recipes with name and target value of the recipe ingredients. User guidance through display.	 Battery operation: Ready for battery operation. The battery type is specified for each device.
 Memory: Balance memory capacity, e.g. for article data, weighing data, tare weights, PLU etc.	 Recipe level C: Internal memory for complete recipes with name and target value of the recipe ingredients. User guidance through display. Additional convenient functions, such as barcode and back calculation functions.	 Rechargeable battery pack: Rechargeable set.
 Data interface RS-232: To connect the balance to a printer, PC or network.	 Totalising level A: The weights of similar items can be added together and the total can be printed out.	 Mains adapter: 230V/50Hz in standard version for EU. On request GB, AUS or USA version available.
 RS-485 data interface: To connect the balance to a printer, PC or other peripherals. High tolerance against electromagnetic disturbance.	 Totalising level C: Internal memory for complete recipes with name and target value of the recipe ingredients. User guidance through display. Additional convenient functions, such as barcode and back calculation.	 Power supply: Integrated in balance. 230V/50Hz standard EU. More standards e.g. GB, AUS or USA on request.
 USB data interface: To connect the balance to a printer, PC or other peripherals.	 Strain gauges: Electrical resistor on an elastic deforming body.	 Tuning fork principle: A resonating body is electromagnetically excited, causing it to oscillate.
 Bluetooth data interface: To transfer data from the balance to a printer, PC or other peripherals.	 Percentage determination: Determining the deviation in % from the target value (100 %).	 Electromagnetic force compensation: Coil inside a permanent magnet. For the most accurate weighings.
 WLAN data interface: To transfer data from the balance to a printer, PC or other peripherals.	 Weighing units: Can be switched to e.g. non-metric units at the touch of a key. See balance model. Please refer to KERN's website for more details.	 Single cell technology: Advanced version of the force compensation principle with the highest level of precision.
 Control outputs (optocoupler, digital I/O): To connect relays, signal lamps, valves, etc.	 Weighing with tolerance range: Upper and lower limiting values can be programmed individually for e.g. dosing, sorting and portioning.	 Verification possible: The time required for verification is specified in the pictogram.
 Interface for second balance: For direct connection of a second balance.	 Vibration-free weighing: (Animal weighing program) When the weighing conditions are unstable, a stable weight is calculated as an average value.	 DAkkS calibration possible: The time required for DAkkS calibration is shown in days in the pictogram.
 Network interface: For connecting the scale to an Ethernet network. With KERN products you can use a universal RS-232/LAN converter.	 Protection against dust and water splashes IPxx: The type of protection is shown in the pictogram. For details see the glossary.	 Package shipment: The time required for internal shipping preparations is shown in days in the pictogram.
 GLP/ISO log: The balance displays the weight, date and time, regardless of a printer connection.	 ATEX explosion protection: Suitable for use in hazardous industrial environments, in which there is explosion danger. The ATEX marking is specified for each device.	 Pallet shipment: The time required for internal shipping preparations is shown in days in the pictogram.
 GLP/ISO log: With weight, date and time. Only with KERN printers, see "Accessories"	 Stainless steel: The balance is protected against corrosion.	 Warranty: The warranty period is shown in the pictogram.
 Piece counting: Reference quantities selectable. Display can be switched from piece to weight.		

Precision is our business

To ensure the high precision of your balance KERN offers you the the appropriate test weight in the international OIML error limit classes E1-M3 from 1 mg - 2000 kg. In combination with a DAkkS calibration certificate the best pre-requisite for proper balance calibration.

The KERN DAkkS calibration laboratory today is one of the most modern and best-equipped DAkkS calibration laboratories for balances, test weights and force-measurement in Europe.

Your KERN specialist dealer:

Thanks to the high level of automation, we can carry out DAkkS calibration of balances, test weights and force-measuring devices 24 hours a day, 7 days a week.

Range of services:

- DAkkS calibration of balances with a maximum load of up to 6 t
- DAkkS calibration of weights in the range of 1 mg - 500 kg
- Database supported management of checking equipment and reminder service
- Calibration of force-measuring devices
- DAkkS calibration certificates in the following languages D, GB, F, I, E, NL